



KVHA News – Everett & Seattle Jr. Form Working Agreement, Team Seattle Dissolved

Kent Valley Ice Centre, Kent, WA. April 10, 2014 – The 2013/2014 Hockey Season has ended and KVHA is moving on to promoting KVIC's spring programs, planning for summer hockey programs and preparing for 2014/2015 registration. KVHA hopes to open next season's registration in short order. In the mean time, here's some breaking news from the local hockey community!

Everett Youth Hockey & Seattle Junior Hockey Association Partner to Form Elite Teams

Comcast Arena, Everett, WA April 9, 2014 – The Everett Silvertips and Everett Youth Hockey are pleased to announce a cooperative working agreement with the Seattle Junior Hockey Association for the purpose of creating Elite Tier I teams both at the Midget and Bantam levels for the 2014-15 season. The two organizations will lend their resources and expertise to create local programs that afford players greater opportunities to develop at a high level right here at home in the Pacific Northwest while showcasing their skills to the greater hockey world.

By partnering to create elite 16U and 14U programs, EYH and SJHA can work together to ensure that local youth players develop to their utmost potential while also gaining needed exposure to open a wider range of opportunities for their hockey careers. The combination of high-level players and experienced coaches, scouts and organizers from both organizations will also allow the Greater Seattle area to once again field Midget and Bantam teams that are capable of competing and excelling against the best competition North America has to offer.

"This partnership is exciting not only because it opens the door to top-notch coaching, training, and facilities, but more importantly provides a clearly defined path allowing the top players in the region to stay at home and play the game they love at a level that is representative of their talent," explained EYH General Manager Jerry Weir. *"Eliminating the need to relocate to other states is preferable for local players and their families, plus our program will provide everything necessary for kids from outside this region to play here and feel at home."*

Operating as the Everett Junior Silvertips, the Tier I 16U team will be based at Comcast Arena in downtown Everett. The Northwest Admirals 14U team will base out of both Lynnwood Ice Center and OlympicView Arena in Mountlake Terrace.

"We are embracing the evolution of youth hockey and are deeply committed to growing the game in the Pacific Northwest at every level through USA Hockey's American Development Model," said SJHA President Michael Murphy. *"Through this partnership, we believe we are taking the next step towards seeing more of our homegrown talent competing at higher levels of Junior, College and Professional Hockey."*

Additional information, including leagues and coaching staffs for both teams, will be announced in the near future. For more information, visit www.everettsilvertips.com, www.eteamz.com/jrsilvertips or www.sjha.com.

How Does the Demise of Team Seattle Impact Kent Valley Hockey Association?

Kent Valley Ice Centre, Kent, WA. Aril 10, 2014 – Rumors regarding Seattle Junior Hockey's termination of the Joint Operating Agreement (JOA) with Sno-King Amateur have persisted since early October last year. It appears today that they are true. We were able to confirm the termination of the JOA with SnoKing on April 10th. Given the April 9th Press Release (above) from the Everett Silvertips and Seattle Junior AHA it appears that Seattle Junior has already moved on and secured a new partner for joint operations. We wish them the very best.

So, what does the demise of Team Seattle mean for KVHA members, particularly for those 15 KVHA players that left our program in the past two seasons to participate in the Team Seattle program?

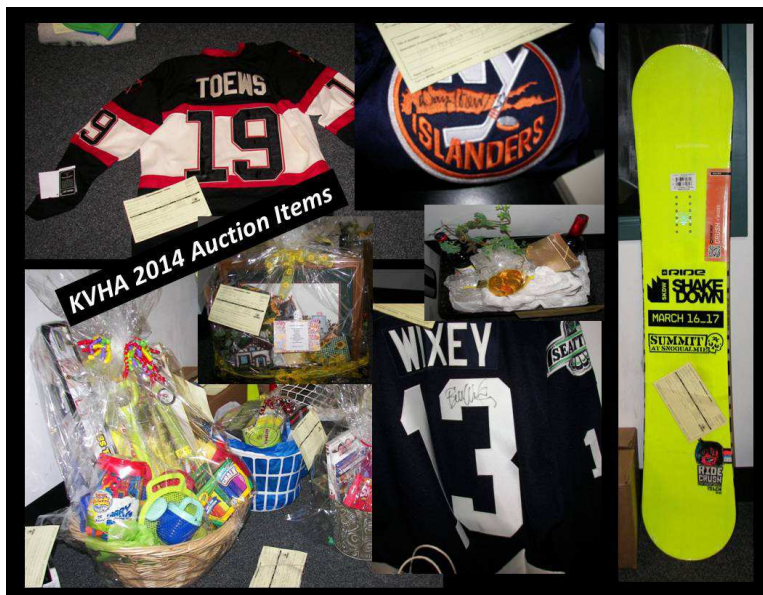
1. Team Seattle players who are former KVHA players are free to return to KVHA next season albeit within the restrictions of PNAHA's Rule 14.
2. It opens up the opportunity for KVHA to focus on retaining players in the local area for building its own elite programs in cooperation with other local hockey associations.
3. The end of Team Seattle will level the playing field for Tier-II competition in the Puget Sound area.

Our initial enthusiasm for the Team Seattle program dwindled over the years as there was less and less involvement and cooperation between KVHA and the Team Seattle partners. KVHA was never invited to be a full partner in the Team Seattle program even though we contributed a good number of players to the program. PNAHA's Rule 14 also got in the way of a smooth transition of players between Team Seattle and their home associations.

The Team Seattle program fell short of meeting the expectations originally outlined by the founding partner associations. Perhaps the Team Seattle experiment would have succeeded if all the hockey associations in the area, those who contributed players, had been granted equal participation and governance in the program. The North Puget Sound Hockey League (NPSHL) was rescued from a similar fate recently when all the participating hockey associations were granted equal voting rights and participation in the program.

Auction Update – Mites are in! How about everyone else?

Kent Valley Ice Centre, Kent, WA. Aril 10, 2014 – The Kent Valley Mites have completed their KVHA Auction commitments with all members turning in their auction items, purchasing tickets and completing their team auction item. The Mites are the first team to be all in... Way to go Mites! Our PeeWee Tornados have also completed their auction commitment with just a couple of minor items remaining. The balance of our teams still have auction items due. Below is a photo of some of the auction items that are mounting up in the auction room, as well as a list of some of the other items:



Jonathan Towes Chicago Blackhawks Jersey,

ShakeDown snow board,

Danny Lorenz NY Islanders autographed jersey,

Bill Wixey, autographed jersey,

Wine Baskets,

A variety of Theme Baskets,

Three, count em, Mr. Heater Buddy space heaters,

Portable power generator,

Makita power drill set,

and much more!

Quote of the Day!

Life Lessons:

"You really learn a lot about yourself when you win the Cup. I know it's cliché, but you learn about commitment, about being a good teammate, about trust, about sacrifice, about

hard work, and about what it takes to become a champion. You learn about how great things can happen when everyone decides to pull the same way, in the same direction. When it all comes together in the end and you are standing there with the Stanley Cup, that's what it's all about."

Joe Nieuwendyk, Stanley Cup winner with Calgary 1989, Dallas 1999, and New Jersey 2003

Quote from **Raising Stanley - NHL LEGENDS IN THEIR OWN WORDS** by Ross Bernstein

KVHA News Contact: Lew Sellers, Director of Communications

Kent Valley Hockey Association
6015 So. 240th Street
Kent, WA. 98032
(206) 914-9619 Cellular
Lew@KentValleyIceCentre.com

KVHA Host Hotel - Proud Sponsors of Kent Valley Hockey		
		
(425) 251-9591 3700 East Valley Road Renton, WA 98057	(253) 520-6670 25100 74 th Ave. S. Kent, WA 98032	Enjoy your favorite beverage or snack at Kent Valley Ice Centre's "On the Edge" Café.

This email is being sent to Tammy Haywood at 2tam@centurytel.net.

This email was sent by Kent Valley Hockey Association, 6015 So. 240th St. Kent, WA. 98032

If you would like to change your email address or unsubscribe, please click [here](#) or, reply to this message and type the word "unsubscribe" in the subject line. To make sure you continue receiving our emails to your inbox (not bulk or junk folders), please add Lewsellers@kentvalleyhockey.com to your address book or safe sender list.